

# The CamlTemplate Manual

## Version 0.9.0

Benjamin Geer

1 May 2004

## 1 Introduction

This manual describes how to use CamlTemplate, a template processor for Objective Caml<sup>1</sup> programs. It can be used to generate web pages, scripts, SQL queries, XML documents and other sorts of text.

### 1.1 About This Manual

This manual is provided in HTML and PDF formats in the CamlTemplate distribution.

### 1.2 Licence

CamlTemplate is free software<sup>2</sup>, released under the GNU General Public License<sup>3</sup>. This manual is released under the same licence.

In addition, as a special exception, Benjamin Geer gives permission to link the code of this program with the Apache HTTP Server (or with modified versions of Apache that use the same license as Apache), and distribute linked combinations including the two. You must obey the GNU General Public License in all respects for all of the code used other than Apache. If you modify this file, you may extend this exception to your version of the file, but you are not obligated to do so. If you do not wish to do so, delete this exception statement from your version.

---

<sup>1</sup><http://caml.inria.fr>

<sup>2</sup><http://www.gnu.org/philosophy/free-sw.html>

<sup>3</sup><http://www.gnu.org/copyleft/gpl.html>

## 1.3 Features

- A versatile, easy-to-learn template syntax that supports common scripting-language constructs, while encouraging a separation between presentation logic and application logic.
- The supported Caml data structures accomodate lists, tables and trees of items in a straightforward manner.
- Works well with `mod_caml`<sup>4</sup>.
- Supports any ASCII-compatible encoding, including UTF-8.
- Optional support for multithreading.

CamlTemplate works by merging data with handwritten templates. This process is illustrated in Figure 1.

The template contains only the handwritten material; some other program provides the data. The template's author doesn't need to be involved in writing that program; he or she only needs to know what data the program provides, and can therefore change the template without involving the program's developers. Likewise, the program can be modified so that it obtains data in a different way, without affecting the template. Different templates can be used to display the same data in different ways (e.g. to generate normal and 'printer-friendly' versions of a web page).

## 1.4 Getting CamlTemplate

The CamlTemplate source code and documentation can be downloaded from the CamlTemplate web site<sup>5</sup>.

## 1.5 Installing CamlTemplate

### 1.5.1 Installing with GODI

If you use GODI<sup>6</sup>, you can install CamlTemplate from `godi_console`. Otherwise, you can install manually as described below.

---

<sup>4</sup>[http://www.merjis.com/developers/mod\\_caml/](http://www.merjis.com/developers/mod_caml/)

<sup>5</sup><http://saucencode.org/camltemplate>

<sup>6</sup><http://www.ocaml-programming.de/godi/>

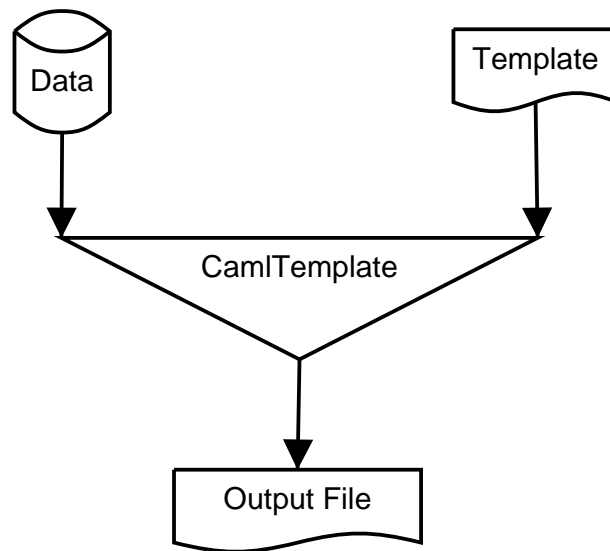


Figure 1: Generating a document

### 1.5.2 Installing Manually

Requirements:

- Objective Caml 3.06 or above.
- findlib<sup>7</sup>.
- PCRE-Ocaml<sup>8</sup>.
- GNU make.

Unpack the archive:

```
tar xzf camltemplate-x.y.z.tar.gz
cd camltemplate-x.y.z
```

To see the configuration options, type:

```
./configure --help
```

If you need thread support, type:

---

<sup>7</sup><http://www.ocaml-programming.de/packages/>

<sup>8</sup>[http://www.oefai.at/~markus/home/ocaml\\_sources.html](http://www.oefai.at/~markus/home/ocaml_sources.html)

```
./configure --enable-threads
```

(Note that thread support doesn't currently work with `mod_caml`.) If you don't need thread support and want to install in the default locations, type:

```
./configure
```

Then type:

```
make
make opt
make test
```

If there are no errors, type `make install` as root. This installs the byte-code and native-code versions of the `camltemplate` library. Documentation is installed in `$PREFIX/doc/camltemplate`. Example programs are installed in `$PREFIX/share/camltemplate`.

To uninstall the library, type `make uninstall` as root.

### 1.5.3 Installing with `mod_caml`

You'll need `mod_caml` 1.0.6 or above and Apache 1.3. (Apache 2.0 seems to be incompatible with modules that use recent versions of PCRE<sup>9</sup>.)

First, install CamlTemplate as described in Section 1.5.2, without thread support.

Then compile and install `mod_caml`. Make sure it works correctly on its own (try the `hello.ml` example that comes with it) before proceeding.

If you're using Objective Caml 3.07, you're done; you can now try compiling and installing the example in `examples/mod_caml`.

If you're running Objective Caml 3.06, find this line in your `httpd.conf`:

```
CamlLoad /path/to/registry.cmo
```

After that line, add the following, and restart Apache:

```
CamlAddInterface Parsing
CamlAddInterface Lexing
CamlAddInterface Obj
CamlLoad /path/to/camltemplate.cma
```

(If you don't know where `camltemplate.cma` is, you can find it by typing `ocamlfind query camltemplate`).

Now try compiling and installing the example in `examples/mod_caml`.

---

<sup>9</sup>[http://nagoya.apache.org/bugzilla/show\\_bug.cgi?id=23952](http://nagoya.apache.org/bugzilla/show_bug.cgi?id=23952)

## 1.6 Mailing List and Support

The `camltemplate`<sup>10</sup> mailing list is used for questions, suggestions, bug reports and discussion about CamlTemplate.

There is also a Frequently Asked Questions<sup>11</sup> page.

## 1.7 Author

CamlTemplate is developed and maintained by Benjamin Geer.

## 1.8 History

In 1999, Benjamin Geer wrote a template processor in Java, called FreeMarker<sup>12</sup>, based on the experience of using a similar tool with graphic designers in a web development shop. CamlTemplate borrows some aspects of FreeMarker (small library not tied to web development, JavaScript-like expressions, Perl-like data structures), as well as some ideas from the Apache Jakarta project's Velocity<sup>13</sup> template processor (generated parser, more concise syntax), released in 2001. The first version of CamlTemplate was released in October 2003.

# 2 Writing Templates

## 2.1 Inserting Values

Here is a simple example of a template for generating an HTML page:

```
<html>
<head>
  <title>${title}</title>
</head>

<body>
<h1>${title}</h1>

Today's date: ${date}
</body>
</html>
```

---

<sup>10</sup><http://lists.saucecode.org/wws/info/camltemplate>

<sup>11</sup><http://saucecode.org/camltemplate/faq.html>

<sup>12</sup><http://www.freemarker.org>

<sup>13</sup><http://jakarta.apache.org/velocity/>

This template expects two pieces of data: a title and a date. A dollar sign followed by an expression in braces is called an *expansion*; it means, ‘insert the value of this expression here’. If the value of `title` was `Important Page`, and the value of `date` was `29 September 2003`, the resulting document would look like this:

```
<html>
<head>
  <title>Important Page</title>
</head>

<body>
<h1>Important Page</h1>

Today's date: 29 September 2003
</body>
</html>
```

A variable such as `title` or `date` is called a *scalar variable*, meaning that it contains only one value.

If an expansion contains a value that has not been set, it produces no output. This makes it convenient to write HTML form elements that display the value previously entered, if any:

```
<input type="text" name="address" value="${address}"/>
```

## 2.2 Hashes

It is often convenient to group several related values together, and give a name to the group. A *hash* is a collection of values, each of which has a name (called a ‘key’). Continuing with the example from the previous section, we might want to break down the date into day, month and year components:

```
Today's date: ${date.day}-${date.month}-${date.year}
```

Here, `date` is a hash, which contains three scalars: `day`, `month` and `year`. (An expression like `date.day` is called a *hash lookup*.) The result might be:

```
Today's date: 29-09-2003
```

Hashes can contain hashes, e.g.:

Date of birth:

```
{user.dob.day}-{user.dob.month}-{user.dob.year}
```

The string value of any variable (or other expression) can be used as a hash key by enclosing the expression in square brackets:

```
Error in field "{fieldName}": {errors[fieldName]}
```

If the value of `fieldName` was always `"title"`, the above would be the same as writing:

```
Error in field "title": {errors.title}
```

## 2.3 Lists

Generated documents often contain lists of data. In a template, the `#foreach` statement processes all the elements in a list. Here's a simple example:

```
<p>Signatories:</p>

<ul>
  #foreach (signatory in signatories)
    <li>{signatory}</li>
  #end
</ul>
```

The output might look like this:

```
<p>Signatories:</p>

<ul>
  <li>Arthur Artichoke</li>
  <li>Bernard Banana</li>
  <li>Carol Carrot</li>
  <li>Dorothy Date</li>
</ul>
```

For each element in the list, the `#foreach` statement stores the element's value temporarily in the name given before the `in`, then processes the template text between the `#foreach` and the `#end`.

Here's an example that generates an HTML table:

```

<table>
<thead>
  <tr>
    <th>Name</th>
    <th>Date of Birth</th>
    <th>Favourite Colour</th>
  </tr>
</thead>
<tbody>
  #foreach (person in garden.people)
  <tr>
    <td>${person.name}</td>
    <td>${person.bdate}</td>
    <td>${person.colour}</td>
  </tr>
  #end
</tbody>
</table>

```

Here `garden` is a hash that contains a list called `people`. Each element of `people` is a hash containing three scalars (`name`, `bdate` and `colour`).

## 2.4 Conditionals

A template can contain optional text, which is used only if some condition is met. The `#if` statement tests a condition. For example:

```

#if (approved)
  This document has been approved for publication.
#else
  This document is awaiting approval.
#end

```

We have seen scalars that contain strings (i.e. text); `true` and `false` are also possible values of a scalar (e.g. approved above). Any scalar is equal to `true` if it has a value other than 0 or the empty string. A list is equal to `true` if it exists and isn't empty. A hash is equal to `true` if it exists. This makes it convenient to check, for example, whether a list contains any values before processing its contents:

```

#if (searchResults)

```



```

#foreach (result in searchResults)
    ...
#end
#end

```

If a scalar contains a string or a number, an expression can test the scalar's value, using comparison operators such as `==` (equals), `!=` (is unequal to), `<` (is less than) and `>` (is greater than). You can also use `#elseif` blocks to test several conditions. For example:

```

#if (hour > 17)
    Good evening!
#elseif (hour > 12)
    Good afternoon!
#else
    Good morning!
#end

#if (status == "approved")
    This document has been approved for publication.
#else
    This document is awaiting approval.
#end

```

See Section 3.6 for the full details of expressions.

## 2.5 Setting values

The `#set` statement assigns a value to a name. The value is not set in the data model that the program has provided; a template cannot use `#set` to change its data model. The value remains internal to the template, and only while the template is being merged; it is then forgotten. Returning to the earlier example of an HTML table, suppose we wanted the background colour of the rows to alternate between yellow and white. We could write:

```

<tbody>
    #set (background = "white")

    #foreach (person in garden.people)
        <tr bgcolor="{$background}">
            <td>{$person.name}</td>

```

```

        <td>${person.bdate}</td>
        <td>${person.colour}</td>
    </tr>

    #if (background == "white")
        #set (background = "yellow")
    #else
        #set (background = "white")
    #end
#end
</tbody>

```

## 2.6 Including Templates in Templates

Rather than copy and paste the same text into several templates, you can put the common text in a separate template, and include that template in other templates using the `#include` statement. For example, you might include a standard header and footer on each page:

```

#include ("header.tmpl")

...

#include ("footer.tmpl")

```

Included templates will not see any values that have been set in the including template, nor can the including template see any values that the included template sets. If you want to pass values into a reusable section of template code, use a macro, as described in the next section.

## 2.7 Macros

To create a reusable bit of template code that uses values you provide, you can write a *macro*. The `#macro` statement defines a macro, which can then be used as a statement in its own right. For example, here is a macro that formats a date in a particular way, given the year, month and day as numbers:

```

#macro formatDate(year, month, day)
    #var (monthPrefix)
    #var (dayPrefix)

```

```

    #if (month < 10)
        #set (monthPrefix = "0")
    #end

    #if (day < 10)
        #set (dayPrefix = "0")
    #end

    ${year}-${monthPrefix}${month}-${dayPrefix}${day}
#end

```

(The `#var` statement will be explained in a moment.)

Here is some template code that expects a hash called `date` like the one we saw in Section 2.2, and uses it to call the `formatDate` macro above:

```

Today's date:
    #formatDate(date.year, date.month, date.day)

```

A macro may be called with fewer arguments than it was defined with; the remaining arguments are set to null. It is an error to call a macro with too many arguments.

### 2.7.1 Defining Variables in Macros

The `#var` statement in the macro above initialises a variable for use within the macro, setting it to a null value. We could have written:

```

#set (monthPrefix = "")

```

But if there was already a variable called `monthPrefix` outside the macro, `#set` would change the value of the existing variable. (Sometimes this might be what you want.) By contrast, a variable initialised inside a macro with `#var` only exists within that macro, and doesn't affect any other variable that might have the same name outside the macro; its value is forgotten once the macro has completed. Once you have used `#var` to initialise a variable in a macro, you can use `#set` to change its value, as in the example above. To initialise a variable with a value other than null, you can write:

```

#var (colour = "blue")

```

When used outside of a macro, `#var` has the same effect as `#set`.

### 2.7.2 Storing Macros in Separate Templates

If there are some macros that you want to use in more than one template, you can define them in a separate template, which we'll call a *macro template*. In each template where you want to use those macros, you then need to tell CamlTemplate where to look for them, using the `#open` statement. For example, if you've written a macro template called `macros.tpl`, and you want to use them in a template called `test.tpl`, you would put the following line in `test.tpl`, before using any of the macros:

```
#open ( "macros.tpl" )
```

You can put several `#open` statements in a template. When you call a macro, CamlTemplate looks for it first in the template that's being merged, and then in any macro templates that have been opened in that template.

## 2.8 Functions

A function can be supplied to a template as part of its data. Since functions are written in Objective Caml, they can do things that would be cumbersome or impossible to do in macros. A function takes one or more expressions as arguments, and returns a value, which can be used in an expansion or in a statement.

For example, CamlTemplate provides a function called `escHtml`, for escaping special characters in HTML documents. It can be used like this:

```
Company name: ${escHtml(companyName)}
```

If the value of `companyName` was `Artichoke & Banana`, the output would be:

```
Company name: Artichoke & Banana
```

In addition to `escHtml`, CamlTemplate provides the following functions, which application developers can choose to make available to templates:

**urlEncode** URL-encodes a string.

**escHtmlAttr** Escapes special characters in text to be included in an HTML attribute.

**escHtmlTextarea** Escapes special characters in text to be included in an HTML textarea.

**asList** Converts any value to a list, if it isn't already a list. If the argument is a list, returns the argument. If the argument is null, returns an empty list. Otherwise, returns a single-element list containing the argument. This is useful for dealing with form input fields that can have multiple values.

Each of these functions expects one argument.

## 2.9 Comments

You can write a comment in a template by surrounding it with `#*` and `*#`:

```
#* This is a comment. *#
```

Comments do not appear in the output when a template is merged. Comments can contain comments.

## 3 Template Syntax Reference

### 3.1 Whitespace

Spaces, tabs and newlines are ignored in expressions.

When a line begins with whitespace followed by the `#` of a statement, the whitespace is ignored, i.e. not included in the output. Whitespace immediately preceding a comment is always ignored, whether or not it is at the beginning of a line.

A newline immediately following the closing parenthesis in a statement, or immediately following `#else`, `#end` or `*#`, is ignored. Thus, statements and comments can be indented more or less naturally, and split across multiple lines, without producing extra whitespace in the output.

In other contexts where a newline makes the template more readable, but you don't want to include it in the output, you can precede it with a `#`; both the `#` and the newline will be ignored, e.g.:

```
#if (check)
  yes#
#else
  no#
#end
```

## 3.2 Comments

`#* comment *#`

Comments can be nested.

## 3.3 Escaping Characters

When used literally (rather than to indicate an expansion or a statement), `$ {` and `#` must be escaped with a backslash:

`\$ {`  
`\#`

Additional backslashes preceding an escape sequence are simply included in the output, as are backslashes not followed by `$ {` or `#`.

## 3.4 Expansions

`$ { expression }`

Adds the value of *expression* (which must evaluate to a scalar) to the output.

## 3.5 Statements

A statement begins with a `#` character followed by a keyword. When a statement has a body, it is terminated by `#end`. If you need `#end` to be followed by a letter, you can write `#end#`; similarly, you can write `#else#` instead of `#else`. This makes it possible to write a template without newlines, e.g.:

`There #if (n == 1)is 1 file#else#are $ {n} files#end#.`

### 3.5.1 foreach

`#foreach (name in expression)`

*template text*

`#end`

Evaluates *expression* as a list; iterates over the list, assigning each element in turn to *name*. Any previous value of *name* is temporarily hidden.

### 3.5.2 if

```
#if (expression)  
    template text  
#elseif (expression)  
    template text  
#else  
    template text  
#end
```

The `#elseif` and `#else` blocks are optional; any number of `#elseif` blocks may be used. You can write `#else#` instead of `#else`.

### 3.5.3 set

```
#set (name = expression)
```

Assigns the value of *expression* to the variable *name* in one of the following places, in order of preference:

1. In macro scope, if invoked in macro scope and the variable already has a value there.
2. In template scope.

### 3.5.4 var

```
#var (name)  
#var (name = expression)
```

Assigns the value of *expression* (or a null value if *expression* is not supplied), to the variable *name* in one of the following places, in order of preference:

1. In macro scope, if invoked in macro scope.
2. In template scope.

### 3.5.5 include

```
#include (expression)
```

Interprets the string value of *expression* as the name of a template, and includes the contents of that template in the one currently being processed.

### 3.5.6 Macro Definition

```
#macro macroname (paramname1, paramname2, ... paramnamen)  
    template text  
#end
```

Defines a macro called *macroname* that takes *n* parameters.

### 3.5.7 Macro Invocation

```
#macroname (param1, param2, ... paramn)
```

Invokes the macro called *macroname*. If a macro is called with fewer parameters than were defined in the macro, the remaining parameters are set to null.

### 3.5.8 open

```
#open (expression)
```

Interprets the string value of *expression* as the name of a template, and adds it to the list of templates in which macros will be searched for when invoked in the currently running template.

## 3.6 Expressions

### 3.6.1 Data Types

- Scalar:

**String** A string literal is enclosed in double quotes: "*string*"). A double quote in a string literal must be escaped by preceding it with a backslash. The escapes `\t` (tab), `\r` (carriage return) and `\n` (newline) can also be used; `\\` produces a backslash.



**Integer** An integer literal is a sequence of one or more digits, optionally preceded by a minus sign. For convenience and readability, underscore characters (`_`) are accepted (and ignored) within integer literals.

**Float** A floating-point literal consists of an integer part, a decimal part and an exponent part. The integer part is a sequence of one or more digits, optionally preceded by a minus sign. The decimal part is a decimal point followed by zero, one or more digits. The exponent part is the character `e` or `E` followed by an optional `+` or `-` sign, followed by one or more digits. The decimal part or the exponent part can be omitted, but not both (to avoid ambiguity with integer literals). For convenience and readability, underscore characters (`_`) are accepted (and ignored) within floating-point literals.

**Boolean** The boolean literals are `true` and `false`.

- Hash. Keys are identifiers, values are any template data type.
- List. Values are any template data type.
- Null. A nonexistent value of any type is represented as `null`. The null literal is `null`.

### 3.6.2 Conversions

Scalar types are converted to other scalar types automatically. When an operator has one integer operand and one float operand, the integer is promoted to a float. Otherwise, the interpreter attempts to convert the right-hand side of an expression to the type of the left-hand side, and raises `Template_error` if this not possible.

Any value can be compared with a boolean or null value. All scalar values are equal to `true` except integer `0` and the empty string; a null value is equal to `false`. All list and hash values are equal to `true` except the empty list. The string and integer values of `true` are `"true"` and `1`, respectively; the string and integer values of `false` are `" "` (the empty string) and `0`.

### 3.6.3 Identifiers

The characters allowed in identifiers are upper-case and lower-case ASCII letters, digits, the underscore and the apostrophe. The first character of an identifier must be an ASCII letter.

<i>Operator</i>	<i>Meaning</i>	<i>Compatible Types</i>
!	unary not	boolean values
-	subtraction, unary negation	integers, floats
+	addition, string concatenation	integers, floats, strings
*	multiplication	integers, floats
/	division	integers, floats
%	modulo	integers, floats
==	equality	scalars
!=	inequality	scalars
<	less than	integers, floats, strings
>	greater than	integers, floats, strings
<=	less than or equal to	integers, floats, strings
>=	greater than or equal to	integers, floats, strings
&&	and	boolean values
	or	boolean values
.	hash lookup with identifier as key	hash on left, identifier on right
[]	hash lookup with string as key	hash on left, string on right
()	function call	function on left, comma-separated expressions in parentheses
=	assignment	identifier on left, expression on right

Table 1: Operators

### 3.6.4 Operators

Table 1 lists the operators supported in expressions. Standard operator precedence applies, and can be overridden using parentheses.

## 4 Programming with the CamlTemplate Library

When reading this section, you will probably find it helpful to refer to the CamlTemplate API documentation, which is generated by `ocamldoc` and provided in the `doc/api` directory of the CamlTemplate distribution.

## 4.1 The General Procedure

The general procedure is as follows:

1. Create a template cache using `Cache.create`.
2. Create a data model consisting of values of type `Model.tvalue`.
3. Load a template using `Cache.get_template`.
4. Pass the template to the merge function to generate output.

Here is ‘Hello, world!’ with a template. The template is as follows:

```
Here is the message: ${message}
```

And here is a program that uses it:

```
open Printf ;;
open CamlTemplate.Model ;;

let _ =
  (* Make a template cache. *)
  let cache = CamlTemplate.Cache.create () in
  (* Create a model. *)
  let model = Hashtbl.create 4 in
  Hashtbl.add model "message"
    (Tstr "Hello, world!");
  try
    (* Get the template. *)
    let tpl =
      CamlTemplate.Cache.get_template
        cache "hello.tpl"
      (* Make a buffer for the output. *)
    and buf = Buffer.create 256 in
    (* Generate output. *)
    CamlTemplate.merge tpl model buf;
    print_string (Buffer.contents buf)
  with
    CamlTemplate.Syntax_error msg ->
      eprintf "\n%s\n" msg
    | CamlTemplate.Template_error msg ->
      eprintf "\n%s\n" msg ;;
```

There are other examples in the examples directory of the distribution.

## 4.2 Template Data Models

A template data model is a tree of values; these values can be scalars (strings, integers or booleans), lists, hashtables or functions. The root of the tree must be a hashtable. In a template, an identifier by itself is the name of an entry in that root hashtable.

Tabular data can be represented as a list of hashes of scalars. Each element in the list represents a row in the table, and consists of a hash in which the names are column names and the values are cell values. Such a model can be handled as shown in Section 2.3.

## 4.3 Loading and Caching Templates

Once loaded and parsed, templates are cached; the `Cache` module provides functions for creating template caches, getting templates from them and configuring the behaviour of a cache (e.g. how often it is refreshed). By default, templates are loaded from files, but you can provide a class of type `source_loader` to load them from another source.

The `#include` and `#open` statements fetch the included or opened template from the cache when the enclosing template is merged. Therefore, if an `#include` or `#open` refers to a template that doesn't exist, this won't be detected until the outer template is merged.

Macros are stored in the templates in which they are defined. When a template containing a macro definition changes, the macro definition is updated as well.

## 4.4 Threads

If `CamlTemplate` has been compiled with thread support, multiple threads can safely pass the same template (or different templates) to the `merge` function, and multiple templates running in different threads can safely use the same model, as long as no template function changes the model. (Note that none of the template statements, including `#set` and `#var`, can change the model.) Values set using `#set` and `#var` are visible only to the thread that set them.

## 4.5 Error Handling

The `get_template` function raises `Syntax_error` if it cannot parse a template. It may also raise other exceptions if it fails to read template source code because of an I/O error.

If a template cannot be merged because of a run-time error (e.g. a wrong data type), the `merge` function raises `Template_error`.

If a Caml function called from a template is unable to complete successfully, it can raise `Template_function_error`; this causes merge to raise `Template_error`.

## 5 Design

This section describes the implementation of CamlTemplate; you don't need to read it unless you are interested in developing CamlTemplate itself.

CamlTemplate is a fairly straightforward implementation of the Interpreter<sup>14</sup> pattern. It uses `ocamllex` and `ocamlyacc` to parse template source code, generating an abstract syntax tree consisting of objects; these objects do the work of interpreting the template.

### 5.1 The Abstract Syntax Tree

There are two kinds of objects in the abstract syntax tree, represented by the virtual classes `statement` and `expression`. Statements produce output; expressions have values. A template consists essentially of a list of statements (each of which may contain one or more lists of statements, e.g. to represent the body of a loop, or the branches of a conditional); when merged, the template iterates over its statements, calling each statement's `interpret` method in turn.

### 5.2 The Parser and Lexer

The parser is very straightforward, and probably needs no explanation if you are familiar with `ocamlyacc`. The lexer, on the other hand, is rather complicated, mainly because of the absence of delimiters around literal text in a template language; this requires us to assume that we are reading literal text until we get to something that looks like template language syntax.

The CamlTemplate lexer therefore maintains some state to indicate which sort of environment is being tokenised. The variable `cur_mode` keeps track of whether the lexer is currently in literal text, an expansion or a statement. For the most part, instead of using specialised rules, the lexer uses a single rule containing all the patterns that are meaningful in tokens; once it has matched a pattern, it decides what to do depending on its current mode.

---

<sup>14</sup>Erich Gamma et al., *Design Patterns: Elements of Resuable Object-Oriented Software*, Addison Wesley Longman, 1997.

### 5.3 Scopes

Scopes in CamlTemplate are roughly patterned after those in JavaScript. There are two writable scopes, template scope and macro scope; the template model is an additional read-only scope. Assignment and lookup of values in scopes are encapsulated in the `scope` class in `ctScope.ml`.

### 5.4 Thread Support

Since parser and lexer both maintain some global state, and since template caches are modifiable, they are all protected by a global mutex (in `ctCache.ml`) when thread support is compiled in.